

PSSu, head module, control system PSSu I/O, standard, 2 RJ45 ports, PROFINET IO DEVICE, PROFIenergy, IRT/RT, MRP, shared device.



Technical details

General data

Approval:	CE, cULus Listed
Application range:	Standard

Technical data

PROFINET interface

Settable trans.rate PROFINET:	100 MBit/s
PROFINET certification:	PNO
PROFINET manufacturer ID:	092Fh
Connector type PROFINET i/f:	RJ45
PROFINET type:	Slave

Environmental data

Climatic suitability to ...:	EN 60068-2-30, EN 60068-2-2, EN 60068-2-1, EN 60068-2-78, EN 60068-2-14
Ambient temperature:	0 - 60 °C
Climatic suitability standard:	EN 60068-2-78
Humidity rating:	93 % r. h. at 40 °C
Condensation permitted?:	Not permitted
Perm. operating height ASL:	2000 m
EMC to standard ...:	EN 61000-4-4, EN 61000-6-2, EN 61000-4-5, EN 61000-4-6, EN 61000-6-4, EN 61000-4-2, EN 61000-4-3
Vibration to standard ...:	EN 60068-2-6

Acc. shock to standard1:	15g
Acc. shock to standard2:	25g
Clearance & creepage dist. to:	EN 60664-1
Overvoltage category:	II
Pollution degree clear.&creep.:	2
Mechanical data	
Housing material lower section:	PC
Housing material front plate:	PC
Height dimension:	128.4 mm
Width dimension:	75.2 mm
Depth dimension:	79.4 mm
Net weight:	170 g
Gross weight:	230 g
Environment	
REACH compliance:	contains min. 1 SVHC-substance
WEEE classification (08/2018):	5 devices (feed size < 50cm)
Commercial data	
ECLASS version:	ECLASS-9.1
ECLASS Reference Feature:	27242608
ETIM Version:	ETIM-7.0
ETIM Reference Group:	EG000024

Obligatory accessories



312191

PSSu E F PS1



312190

PSSu E F PS

311070 PSS SB BUSCABLE

311074 PSS SB BUSCABLE LC



312650 PSSu BS 1/8 S



312651 PSSu BS 1/8 C



312656 PSSu BS 2/8 S



312657 PSSu BS 2/8 C

Optional accessories



312964 PSSu A SH T (10 pcs.)



312963 PSSu A SH S (10 pcs.)



312900

PSSu A ET (10 pcs.)



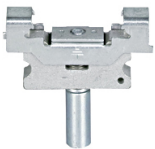
312902

PSSu A EC



312967

PSSu A LA0.1 (10 x 108 pcs.)



312901

PSSu A ETM (2 pcs.)



312958

PSSu A LA0 (10 x 108 pcs.)



312949

PSSu A ET PE (10 pcs.)



312993

PSSu A USB-CAB05



312992

PSSu A USB-CAB03