

## PSSu H m F DP ETH SD

312060



PSSu, head module, control system PSSu Multi, failsafe, PL e, SIL CL 3, 1 D-Sub female connector 9-pin, PROFIBUS-DP slave, transmission rates 9.6 kBit/s - 12 MBit/s, 1 RJ45 port, Modbus/TCP, Raw UDP, Raw TCP, SD card.

## Technical details

### General data

|                    |  |
|--------------------|--|
| Approval:          | CE, cULus Listed, KOSHA, EAC (Eurasian), TÜV |
| Application range: | Standard/failsafe                            |

### Technical data

#### Electrical data

|                                  |                        |
|----------------------------------|------------------------|
| Purpose of U1:                   | Module supply          |
| Supply voltage (V):              | 24 - 24 V              |
| Type of supply voltage U1:       | DC                     |
| Power consumption DC:            | 16.1 W                 |
| Purpose of U2:                   | Periphery supply       |
| Supply voltage 2 (V):            | 24 - 24 V              |
| Type of supply voltage U2:       | DC                     |
| Tolerance of U2:                 | -30 %/+25 %            |
| Pot. isolation U1 to U2:         | 3050 V                 |
| Potential isolation U1 to U2:    | 3050 V                 |
| Purpose of U1INT1:               | int. system voltage    |
| Type of U1INT1:                  | DC                     |
| Tolerance of U1INT1:             | -2 %/+3 %              |
| Max. curr. contin. oper. U1INT1: | 2 A                    |
| Bridge U-interrupt U1INT1 stan.: | EN 61131-2, EN 61496-1 |

|                                 |  |
|---------------------------------|--|
| UINT1 short circuit proof:      | Yes  |
| Programming                     |  |
| IEC 61131 programming:          | No   |
| Multi programming:              | Yes  |
| Non-volatile variables:         | No   |
| CPU                             |  |
| Time deviation:                 | +/- 10s/day  |
| RAM:                            | 128MB  |
| User memory total:              | 2 MB   |
| Removable storage media         |  |
| Plug-in memory:                 | SD card  |
| SafetyNET p interface           |  |
| Connector type Safetynet i/f:   | RJ45   |
| Safetynet transmission rate:    | 100 MBit/s   |
| Setting SafetyNet trans.rate:   | Automatic  |
| PROFIBUS-DP interface           |  |
| Profibus type:                  | Slave  |
| Perm. PROFIB. statn. addresses: | 0 ... 126d   |
| Setting PROFIBUS station addr.: | DIP switch   |
| Settable trans.rate PROFIBUS:   | 185.5 kBit/s, 6 MBit/s, 500 kBit/s, 93.75 kBit/s, 19.2 kBit/s, 12 MBit/s, 1.5 MBit/s, 9.6 kBit/s, 3 MBit/s, 45.45 kBit/s |
| Trans. rate setting PROFIBUS:   | Automatic  |
| Connector type Profibus inter.: | 9-pin D-Sub female connector   |
| Name PROFIBUS protocol:         | DPV0   |
| PROFIBUS operating modes:       | Freeze Mode, Set Slave Address, Sync Mode, AutoBaud  |
| Name description file profib:   | Pilz0CB0.gsd   |
| PROFIBUS manufacturer ID:       | 0CB0h  |
| PROFIBUS cycle time:            | 2 ... 300 000 ms   |
| Ethernet interface              |  |

|                                 |  |
|---------------------------------|--|
| Ethernet IP address:            | 169.254.X.Y  |
| Connector type ETHERNET int.:   | RJ45   |
| Ethernet transmission rate:     | 100 MBit/s   |
| CANopen interface               |  |
| Number of Ethernet interfaces:  | 1  |
| Modbus/TCP                      |  |
| MODBUS cycle time:              | 2 ... 2 000 000 ms   |
| Raw UDP                         |  |
| RAW UDP cycle time:             | 2 ... 2 000 000 ms   |
| Environmental data              |  |
| Climatic suitability to ...:    | EN 60068-2-30, EN 60068-2-2, EN 60068-2-1, EN 60068-2-78, EN 60068-2-14                          |
| Ambient temperature:            | 0 - 60 °C  |
| Climatic suitability standard:  | EN 60068-2-78  |
| Humidity rating:                | 93 % r. h. at 40 °C  |
| Condensation permitted?:        | Not permitted  |
| Perm. operating height ASL:     | 2000 m   |
| EMC to standard ...:            | EN 61000-6-2, EN 61000-4-4, EN 61000-4-5, EN 61000-6-4, EN 61000-4-6, EN 61000-4-2, EN 61000-4-3 |
| Vibration to standard ...:      | EN 60068-2-6   |
| Acc. shock to standard1:        | 15g  |
| Clearance & creepage dist. to:  | EN 60664-1   |
| Overvoltage category:           | II   |
| Pollution degree clear.&creep.: | 2  |
| Mechanical data                 |  |
| Housing material lower section: | PC   |
| Connection terminal:            | Screw terminal, Spring-loaded terminal   |
| Terminal style:                 | plug-in  |
| Flex. cond. c/s AWG info:       | 24 - 12 AWG  |
| Height dimension:               | 125.6 mm   |

|                  |         |
|------------------|---------|
| Width dimension: | 130 mm  |
| Depth dimension: | 83.7 mm |
| Net weight:      | 375 g   |
| Gross weight:    | 415 g   |

## Obligatory accessories



313110

PSSu A Con 1/4 S (2 pcs.)



313111

PSSu A Con 2/8 C (2 pcs.)

## Optional accessories



314085

PSSu H FS SN SD-T



312085

PSSu H FS SN SD



312065

PSSu H m F DP SN SD











380070

Stripping Tool



312066

PSSu H m F DPsafe SN SD

|   |        |                             |
|---|--------|-----------------------------|
|    | 380001 | SN CAB RJ45s RJ45s, 0,5m    |
|    | 380000 | SafetyNET p Cable per mtr   |
|    | 380005 | SN CAB RJ45s RJ45s, 2m      |
|   | 312958 | PSSu A LA0 (10 x 108 pcs.)  |
|  | 380003 | SN CAB RJ45s RJ45s, 1m      |
|  | 380400 | SafetyNET p Connector RJ45s |
|  | 380009 | SN CAB RJ45s RJ45s, 10m     |
|  | 380007 | SN CAB RJ45s RJ45s, 5m      |
|  | 314070 | PSSu H PLC1 FS SN SD-T      |



312070

PSSu H PLC1 FS SN SD



314071

PSSu H PLC1 FS SN SD M12-T



312071

PSSu H PLC1 FS DP SN SD



312900

PSSu A ET (10 pcs.)



380650

PSSnet SHL 6T 2FSMSC MRP



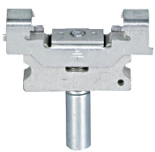
312902

PSSu A EC



312967

PSSu A LA0.1 (10 x 108 pcs.)



312901

PSSu A ETM (2 pcs.)



312949

PSSu A ET PE (10 pcs.)