

PSSu E AI SHT1-T

314261






PSSu, electronic module, passive, analogue inputs and outputs, 1 input, current range 0 - 0.6 A, single-pole, referenced to earth, 2 outputs, 0- 20 mA, single-pole, referenced to earth, scaling 1:100 and 1:200, for increased environmental requirements.

Technical details

Environment	
WEEE classification (08/2018):	5 devices (feed size < 50cm)
Commercial data	
ECLASS version:	ECLASS-9.1
ECLASS Reference Feature:	27242601
ETIM Version:	ETIM-7.0
ETIM Reference Group:	EG000024

Obligatory accessories

	314611	PSSu BP-C 1/8 C-T
	314600	PSSu BP 1/8 S-T
	314601	PSSu BP 1/8 C-T



314618

PSSu BP 1/12 S-T

314619

PSSu BP 1/12 C-T



314620

PSSu BP-C 1/12 S-T



314610

PSSu BP-C 1/8 S-T



314621

PSSu BP-C 1/12 C-T

Optional accessories



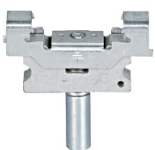
312900

PSSu A ET (10 pcs.)



314902

PSSu A EC-T



312901

PSSu A ETM (2 pcs.)



312967

PSSu A LA0.1 (10 x 108 pcs.)



312958

PSSu A LA0 (10 x 108 pcs.)



312949

PSSu A ET PE (10 pcs.)
